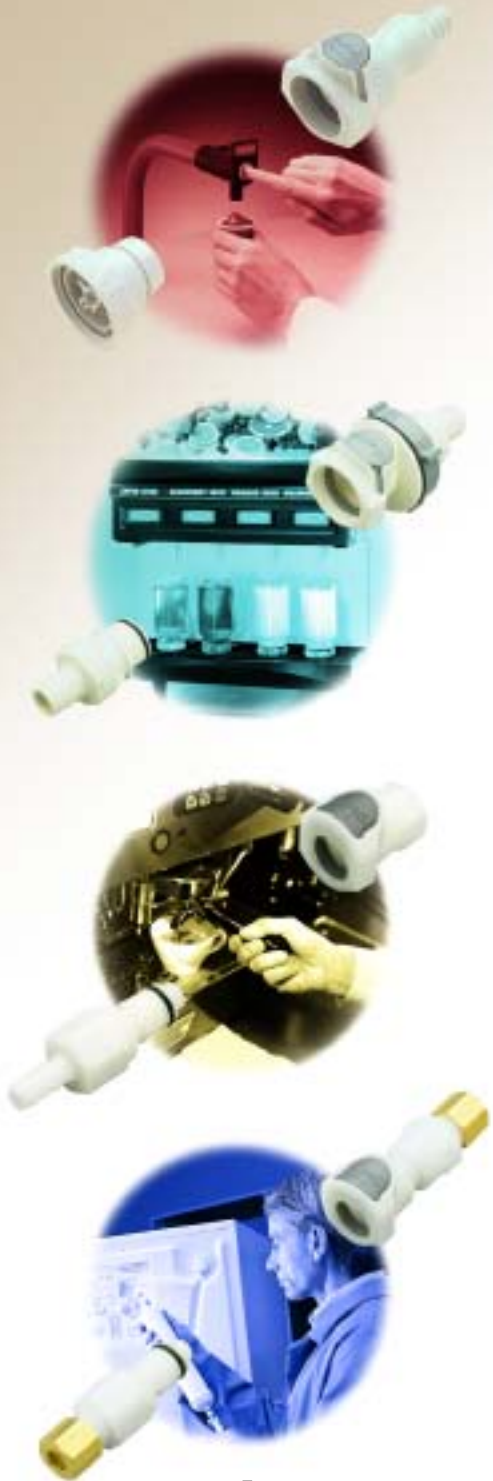


# QUICK COUPLINGS

FOR FOOD, BEVERAGE & WATER  
APPLICATIONS



**CPC** **Colder Products**<sup>®</sup>  
Quick Couplings & Fittings for Plastic Tubing

# Colder Products Company

***Innovative and reliable coupling designs for over twenty years.***

*Colder Products Company is the leader in thermoplastic injection molded quick disconnect couplings for plastic tubing. Since CPC's start in 1978, we have designed and manufactured connecting solutions for the most unique applications through the use of plastic. Companies worldwide specify CPC couplings because they recognize and require the consistent high performance that CPC quick disconnect couplings deliver. Exclusive features such as the CPC thumb latch design facilitates quick one-hand disconnection, while an audible "click" confirms the connection is secure.*

## **Unique solutions for fluid management**

*CPC's design and engineering staff has provided solutions for thousands of customer applications with our versatile standard coupling lines. Customers choose standard couplings in sizes to fit 1/16" to 3/4" and 3 mm to 19 mm plastic tubing, with flow sizes from .047" to 5/8" and 1.2 mm to 15.9 mm. CPC takes pride in our ability to listen to customers and respond with innovative solutions.*

## **CPC markets are as diverse as the applications for plastic tubing.**

Our products are available in the right styles and materials to meet the specific demands of a variety of industries:



**Food & Beverage Service** – CPC provides NSF-listed quick disconnect couplings designed specifically for plastic and copper tubing used in applications for hot and cold beverage machines, in-line filters and bag-in-box condiments. With the speed and convenience of CPC's quick disconnects, the service professional can save money by reducing time spent on maintenance and installation calls.

**Industrial** – A variety of applications use CPC quick disconnect couplings to increase productivity in fluid applications. Acetal, polypropylene, polysulfone, aluminum, and stainless steel couplings are designed to do the job in diverse industrial markets including

Analytical Instruments, Printing and Labeling, Cleaning and Maintenance, Marine and RV, Packaging, Automotive and Aerospace. Please call to request a copy of our full line industrial catalog.



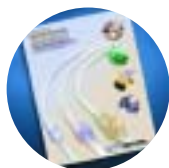
*Industrial*

**Medical** – Health industry professionals appreciate the time-saving and ease-of-use of our USP Class VI compliant couplings. Polysulfone and polycarbonate couplings provide worry-free operation in critical applications. For more on our standard products for Bioprocessing, Medical Device and Disposable applications, please call and request a copy of our full line medical catalog.



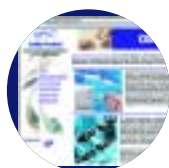
*High Purity Chemical Handling*

**High Purity & Specialty Chemical Handling** – These innovative quick disconnects are designed for critical fluid applications where metal-free flow path, chemical resistance and non-contamination are of the utmost importance. Materials including polypropylene and Teflon® assure the integrity of non-metallic flow paths. Please call to request a copy of our chemical handling products brochure.



*Medical*

**New Electronic Specifier, Free CAD Files and Local Distribution** – Visit Colder Products' Web site and you will find a fast and accurate coupling specifier. The easy-to-use product selector is an enormous time-saver and you will have the opportunity to download 3D CAD files of CPC part numbers. Product and application assistance are readily available from an authorized CPC distributor near you. For additional information or the name of a local CPC distributor, visit our web site at [www.colder.com](http://www.colder.com), or contact us at 1-800-945-3814.



*Website*

ISO 9001  
CERTIFIED

*Teflon is a registered trademark of DuPont Dow Elastomers.*

# Table of Contents

## COUPLINGS

### PLASTIC

APC Series NSF Listed, 1/4" Flow, Acetal (Acetal thumb latch).....	4, 5
PMC Series NSF Listed, 1/8" Flow, Acetal (Stainless Steel thumb latch).....	6
PLC Series NSF Listed, 1/4" Flow, Acetal (Stainless Steel thumb latch).....	7
HFC12 Series NSF Listed, 3/8" Flow, Polypropylene.....	8
HFC35 Series NSF Listed, 3/8" Flow, Polysulfone.....	9

### METALLIC

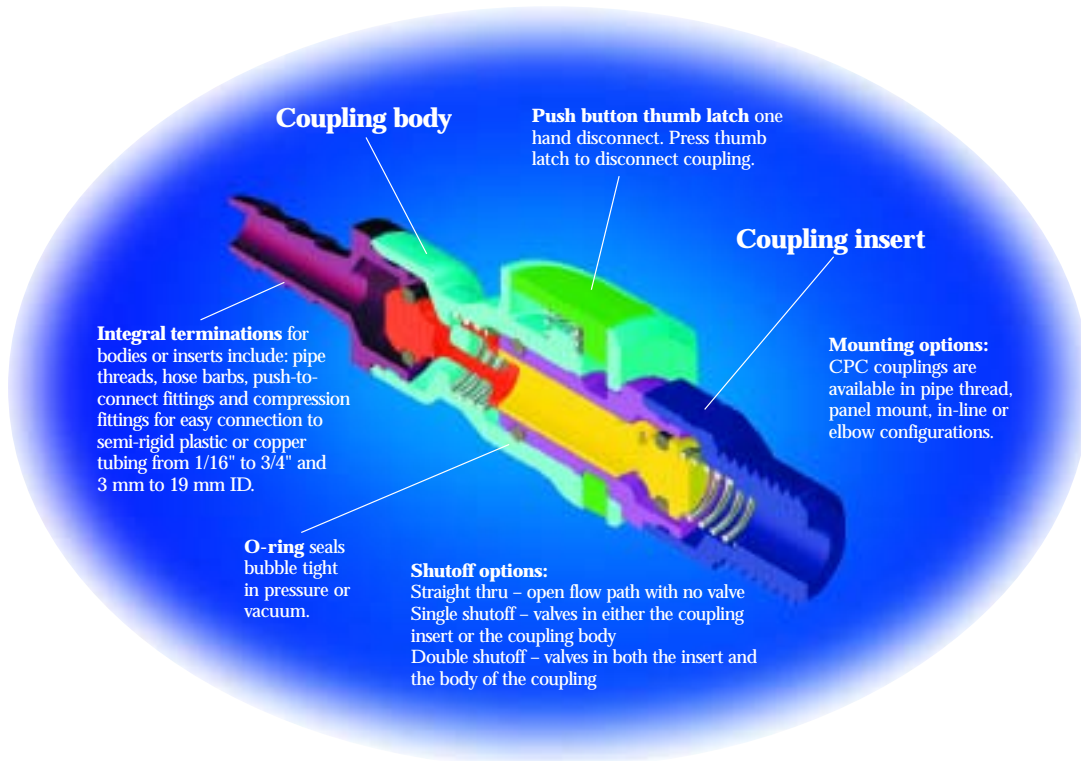
MC Series NSF Listed, 1/8" Flow, Chrome-Plated Brass.....	10
LC Series NSF Listed, 1/4" Flow, Chrome-Plated Brass.....	11

### SPECIALTY

Universal Dispensing Coupler NSF Listed, 3/8" Flow, Polypropylene.....	12
--	----

### CUSTOM DESIGN COUPLINGS

Custom Design Couplings.....	13
Technical Information.....	14
Application Examples.....	15



### FEATURES

- Automatic shutoff (optional)
- Push button thumb latch
- Audible “click”

### ADVANTAGES

- One touch stops flow
- Obvious operation
- Tells you the connection is secure

### BENEFITS

- Saves time and money. No more searching for the shutoff valve. Eliminates messy spills.
- Easy to use and understand; one-hand operation.
- You can feel confident the connection is leak-free.





# APC Series – NSF Listed

## 1/4" Nominal Flow, Acetal

The 1/4" flow APC Series couplings feature a plastic thumb latch, fewer moving parts and a smooth contoured design to deliver ease-of-use and excellent flow in a compact size. The APC Series couplings are designed for use in beverage and water applications (i.e., coffee brewer connections and in-line water filter changeouts). The pivoting elbow helps avoid kinks or unnecessary bends in the fluid lines and makes maintenance a "snap."

U.S. Patent Nos. 5052725, 5104158

NOTE: These couplings conform to listing requirements of NSF standard C-2 for food equipment.



Features	Benefits
Shrouded thumb latch	Protects against accidental disconnects
Elbow configuration that pivots	Can be plumbed from any direction and fits in tight spaces
Clicks when connected	Assurance of reliable connections

- Applications:**
- Potable water filtration
  - Coffee brewer connection
  - Beverage dispensing

## Coupling Bodies

### FEMALE 45° FLARE THREAD

*Straight thru dimension is listed first when two measurements are provided.*

THREAD SIZE	STRAIGHT THRU	SHUTOFF	LENGTH
1/4" Female FL	42000	—	1.13
3/8" Female FL	—	45500	1.83

### PIPE THREAD

THREAD SIZE	STRAIGHT THRU	SHUTOFF	LENGTH
1/4" NPT	44400	45600	1.40
3/8" NPT	49200	45700	1.40

### IN-LINE

**Ferruleless Compression Termination — for use with semi-rigid plastic tubing\***  
(Tubing must meet stated inside and outside diameters.)

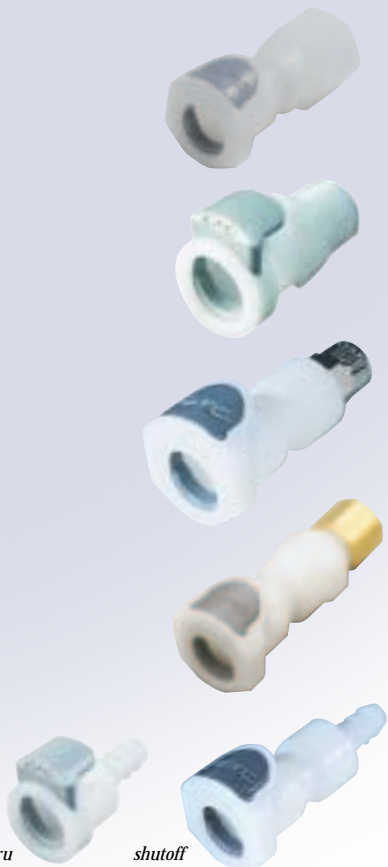
TUBING SIZE	STRAIGHT THRU	SHUTOFF	LENGTH
1/4" OD .170" ID	49300	43200	1.94
3/8" OD .250" ID	49400	43300	2.07

**Compression Termination — for use with copper or semi-rigid plastic tubing**

TUBING SIZE	STRAIGHT THRU	SHUTOFF	LENGTH
1/4" OD	—	46000	1.93
3/8" OD	—	46100	1.86

### Hose Barb

TUBING SIZE	STRAIGHT THRU	SHUTOFF	LENGTH
1/4" ID	40700	42100	1.35/2.07
3/8" ID	40800	42200	1.35/2.07



straight thru

shutoff

\*NOTE: CPC's Ferruleless PTF (Polytube Fitting) terminations do not require ferrules to achieve a leak-free connection and are therefore easier to use and reuse. PTF fittings are designed for semi-rigid tubing, i.e. polyethylene, nylon, polyurethane, etc.

# APC Series Specifications

**Pressure:** Vacuum to 120 psi, 8.3 bar  
**Temperature:** 0°F to 180°F continuous  
 -18°C to 82°C continuous  
**Materials:** Main components and valve: Acetal  
 Thumb latch: Acetal  
 Valve spring: 316 Stainless Steel  
 External spring: 302 Stainless Steel  
 O-rings: Food Grade Buna-N  
 Color: Natural white with charcoal gray latch  
**Tubing sizes:** 1/4" and 3/8" ID, 6.4 mm and 9.5 mm ID  
 1/4" and 3/8" OD, 6.4 mm and 9.5 mm OD  
 6 x 4 mm thru 10 x 8 mm (OD x ID)



## COFFEE BREWER

Connect and disconnect lines at the coffee brewer — without having to shut off the water. (Part numbers shown: (A) 42000 and (B) 42800)

*Makes coffee brewer installations a “SNAP.”*

## Coupling Inserts

### PIPE THREAD

*Straight thru dimension is listed first when two measurements are provided.*

THREAD SIZE	STRAIGHT THRU	SHUTOFF	LENGTH
1/4" NPT	42300	42400	1.43/1.77
3/8" NPT	42500	48600	1.50/1.64

### IN-LINE

**Ferrules Compression Termination — for use with semi-rigid plastic tubing<sup>†</sup>**  
 (Tubing must meet stated inside and outside diameters.)

TUBING SIZE	STRAIGHT THRU	SHUTOFF	LENGTH
1/4" OD .170" ID	—	43400	1.99
3/8" OD .250" ID	—	43500	1.91

**Compression Termination — for use with copper or semi-rigid plastic tubing**

TUBING SIZE	STRAIGHT THRU	SHUTOFF	LENGTH
1/4" OD	—	44900	1.75
3/8" OD	—	45000	1.86

### Hose Barb

TUBING SIZE	STRAIGHT THRU	SHUTOFF	LENGTH
1/4" ID	40900	42600	1.40/2.10
3/8" ID	41000	42700	1.40/1.92

### ELBOW

**Ferrules Compression Termination — for use with semi-rigid plastic tubing<sup>†</sup>**

TUBING SIZE	STRAIGHT THRU	SHUTOFF	LENGTH
1/4" OD .170" ID	49500	43000	1.32/1.45
3/8" OD .250" ID	49600	43100	1.33/1.46

### Hose Barb

TUBING SIZE	STRAIGHT THRU	SHUTOFF	LENGTH
1/4" ID	46200	42800	1.20/1.45
3/8" ID	44700	42900	1.20/1.50



NOTE: For installation instructions, please contact CPC Inside Sales.



# PMC Series – NSF Listed

1/8" Nominal Flow, Acetal

Features	Benefits
CPC thumb latch	One hand connection and disconnection
Integral terminations	Fewer leak points, shorter assemblies, faster installations
Clicks when connected	Assurance of a reliable connection
CPC compatible	Mates with MC and MC SST Series couplings

U.S. Patent No. 4703957

NOTE: These couplings conform to listing requirements of NSF standard C-2 for food equipment



## PMC Series Specifications

**Pressure:** Vacuum to 120 psi, 8.3 bar  
**Temperature:** -40°F to 180°F continuous  
 -40°C to 82°C continuous  
**Materials:** Main components and valves: Acetal  
 Thumb latch: Stainless Steel  
 Valve spring: 316 Stainless Steel  
 External springs and pin: Stainless Steel  
 O-rings: Food Grade Buna-N  
 Color: Natural white, others available  
**Tubing sizes:** 1/16" thru 1/4" ID, 4 mm thru 6.4 mm ID  
 5/32" thru 3/8" OD, 4 mm thru 9.5 mm OD

## PMC/PLC Applications:

- Clean-in-place lines
- Pressure lines
- Dispensing equipment
- Water lines

## Coupling Bodies

### PIPE THREAD

THREAD SIZE	STRAIGHT THRU	SHUTOFF	LENGTH
1/8" NPT	11700	11800	1.00
1/8" BSPT	11900	12000	1.00
1/4" NPT	10700	12100	1.10
1/4" BSPT	12200	12300	1.10

### PANEL MOUNT\*

**Ferruleless Polytube Fitting, PTF<sup>†</sup>**  
 (Tubing must meet stated inside and outside diameters.)

TUBING SIZE	METRIC EQ.	STRAIGHT THRU	SHUTOFF	LENGTH
1/4" OD .170" ID	6 mm OD 4.3 mm ID	12400	12500	1.72

### Hose Barb

TUBING SIZE	METRIC EQ.	STRAIGHT THRU	SHUTOFF	LENGTH
1/8" ID	3.2 mm ID	12600	12700	1.65
1/4" ID	6.4 mm ID	12800	12900	1.85

### IN-LINE

**Ferruleless Polytube Fitting, PTF<sup>†</sup>**  
 (Tubing must meet stated inside and outside diameters.)

TUBING SIZE	METRIC EQ.	STRAIGHT THRU	SHUTOFF	LENGTH
1/4" OD .170" ID	6 mm OD 4.3 mm ID	13000	13100	1.75

### Hose Barb

TUBING SIZE	METRIC EQ.	STRAIGHT THRU	SHUTOFF	LENGTH
1/8" ID	3.2 mm ID	13200	13300	1.65
1/4" ID	6.4 mm ID	10900	11400	1.85

\* Panel Opening = 1/2" Diameter  
 Panel Thread = 1/2-24 UNS  
 Maximum Panel Thickness = 1/2"  
 Minimum Panel Thickness = .050"  
 Panel Nuts = 5/8" Hex

<sup>†</sup>NOTE: CPC's Ferruleless PTF (Polytube Fitting) terminations do not require ferrules to achieve a leak-free connection and are therefore easier to use and reuse. PTF fittings are designed for semi-rigid tubing, i.e. polyethylene, nylon, polyurethane, etc.

## Coupling Inserts

*Straight thru dimension is listed first when two measurements are provided.*

### PIPE THREAD

THREAD SIZE	STRAIGHT THRU	SHUTOFF	LENGTH
1/8" NPT	13400	9000800	1.03/1.45
1/8" BSPT	13500	13600	1.03/1.44
1/4" NPT	11300	13700	1.13/1.42
1/4" BSPT	13800	13900	1.13/1.42

### PANEL MOUNT\*

**Ferruleless Polytube Fitting, PTF<sup>†</sup>** (Tubing must meet stated inside and outside diameters.)

TUBING SIZE	METRIC EQ.	STRAIGHT THRU	SHUTOFF	LENGTH
1/4" OD .170" ID	6 mm OD 4.3 mm ID	14000	14100	1.70/1.82

### Hose Barb

TUBING SIZE	METRIC EQ.	STRAIGHT THRU	SHUTOFF	LENGTH
1/8" ID	3.2 mm ID	14200	14300	1.63/1.75
1/4" ID	6.4 mm ID	14400	11000	1.83/1.95

### IN-LINE

**Ferruleless Polytube Fitting, PTF<sup>†</sup>**  
 (Tubing must meet stated inside and outside diameters.)

TUBING SIZE	METRIC EQ.	STRAIGHT THRU	SHUTOFF	LENGTH
1/4" OD .170" ID	6 mm OD 4.3 mm ID	14500	14600	1.15/1.57

### Hose Barb

TUBING SIZE	METRIC EQ.	STRAIGHT THRU	SHUTOFF	LENGTH
1/8" ID	3.2 mm ID	14700	10400	1.05/1.67
1/4" ID	6.4 mm ID	11600	10800	1.22/1.70

### ELBOW

**Ferruleless Polytube Fitting, PTF<sup>†</sup>**  
 (Tubing must meet stated inside and outside diameters.)

TUBING SIZE	METRIC EQ.	STRAIGHT THRU	SHUTOFF	LENGTH
1/4" OD .170" ID	6 mm OD 4.3 mm ID	10600	14800	1.17/1.21

### Hose Barb

TUBING SIZE	METRIC EQ.	STRAIGHT THRU	SHUTOFF	LENGTH
1/8" ID	3.2 mm ID	14900	15000	.85/1.21
1/4" ID	6.4 mm ID	9000100	9000200	1.00/1.21



# PLC Series – NSF Listed

1/4" Nominal Flow, Acetal

## PLC Series Specifications

**Pressure:** Vacuum to 120 psi, 8.3 bar  
**Temperature:** -40°F to 180°F continuous  
 -40°C to 82°C continuous  
**Materials:** Main components and valves: Acetal  
 Thumb latch: Stainless Steel  
 Valve springs: 316 Stainless Steel  
 External springs and pin: Stainless Steel  
 O-ring: Food Grade Buna-N  
 Color: Natural white, others available  
**Tubing sizes:** 1/4" thru 3/8" ID, 6.4 mm thru 9.5 mm ID  
 1/4" thru 3/8" OD, 6 mm and 9.5 mm OD

NOTE: These couplings conform to listing requirements of NSF standard C-2 for food equipment.



**BUNN® FROZEN BEVERAGE DISPENSER**  
 Quickly connects water and syrup lines.

## Coupling Bodies



### PIPE THREAD

THREAD SIZE	STRAIGHT THRU	SHUTOFF	LENGTH
1/4" NPT	20400	21000	1.17
1/4" BSPT	31500	31600	1.15
3/8" NPT	22600	20600	1.15
3/8" BSPT	29200	29300	1.15

### PANEL MOUNT\*

#### Ferrules Polytube Fitting, PTF<sup>1</sup>

(Tubing must meet stated inside and outside diameters.)

TUBING SIZE	METRIC EQ.	STRAIGHT THRU	SHUTOFF	LENGTH
1/4" OD .170" ID	6 mm OD 4.3 mm ID	29400	29500	1.87
3/8" OD .250" ID	9.5 mm OD 6 mm ID	29600	29700	1.95

#### Hose Barb

TUBING SIZE	METRIC EQ.	STRAIGHT THRU	SHUTOFF	LENGTH
1/4" ID	6.4 mm ID	28000	21100	1.95
3/8" ID	9.5 mm ID	30000	26700	1.95

#### JG® Push-To-Connect

TUBING SIZE	METRIC EQ.	STRAIGHT THRU	SHUTOFF	LENGTH
1/4" OD	6.4 mm OD	30100	28200	1.95

### IN-LINE

#### Ferrules Polytube Fitting, PTF<sup>1</sup>

(Tubing must meet stated inside and outside diameters.)

TUBING SIZE	METRIC EQ.	STRAIGHT THRU	SHUTOFF	LENGTH
1/4" OD .170" ID	6 mm OD 4.3 mm ID	23200	24300	1.82
3/8" OD .250" ID	9.5 mm OD 6 mm ID	24400	24500	1.95

#### Hose Barb

TUBING SIZE	METRIC EQ.	STRAIGHT THRU	SHUTOFF	LENGTH
1/4" ID	6.4 mm ID	22500	22100	1.95
3/8" ID	9.5 mm ID	20500	20800	1.95

#### JG® Push-To-Connect

TUBING SIZE	METRIC EQ.	STRAIGHT THRU	SHUTOFF	LENGTH
1/4" OD	6.4 mm OD	23000	22900	1.95
3/8" OD	9.5 mm OD	24600	22300	2.09

## Coupling Inserts

Straight thru dimension is listed first when two measurements are provided.



### PIPE THREAD

THREAD SIZE	STRAIGHT THRU	SHUTOFF	LENGTH
1/4" NPT	20300	22000	1.25/1.63
1/4" BSPT	29000	26100	1.53/1.63
3/8" NPT	30400	22200	1.25/1.59
3/8" BSPT	30500	30600	1.25/1.64

### PANEL MOUNT\*

#### Ferrules Polytube Fitting, PTF<sup>1</sup>

(Tubing must meet stated inside and outside diameters.)

TUBING SIZE	METRIC EQ.	STRAIGHT THRU	SHUTOFF	LENGTH
1/4" OD .170" ID	6 mm OD 4.3 mm ID	30700	26000	1.78/1.91
3/8" OD .250" ID	9.5 mm OD 6 mm ID	30800	30900	1.91/2.05

#### Hose Barb

TUBING SIZE	METRIC EQ.	STRAIGHT THRU	SHUTOFF	LENGTH
1/4" ID	6.4 mm ID	26500	26600	1.91/2.05
3/8" ID	9.5 mm ID	31200	20900	1.91/2.05

#### JG® Push-To-Connect

TUBING SIZE	METRIC EQ.	STRAIGHT THRU	SHUTOFF	LENGTH
1/4" OD	6.4 mm OD	31300	28300	1.91/2.05

### IN-LINE

#### Ferrules Polytube Fitting, PTF<sup>1</sup>

(Tubing must meet stated inside and outside diameters.)

TUBING SIZE	METRIC EQ.	STRAIGHT THRU	SHUTOFF	LENGTH
1/4" OD .170" ID	6 mm OD 4.3 mm ID	23300	25000	1.25/1.88
3/8" OD .250" ID	9.5 mm OD 6 mm ID	25100	25200	1.38/1.82

#### Hose Barb

TUBING SIZE	METRIC EQ.	STRAIGHT THRU	SHUTOFF	LENGTH
1/4" ID	6.4 mm ID	22400	21500	1.35/1.99
3/8" ID	9.5 mm ID	20100	21400	1.51/2.11

#### JG® Push-To-Connect

TUBING SIZE	METRIC EQ.	STRAIGHT THRU	SHUTOFF	LENGTH
1/4" OD	6.4 mm OD	23100	24700	1.35/1.95
3/8" OD	9.5 mm OD	24800	24900	1.51/2.11

\* Panel Opening = 11/16" Diameter  
 Panel Thread = 11/16-24 UNEF  
 Maximum Panel Thickness = 1/2"  
 Minimum Panel Thickness = .020"  
 Panel Nuts = 13/16" Hex

NOTE: Many BSPT and metric sizes available; please contact the factory for a quote.  
 JG is a registered trademark of John Guest USA, Inc. For JG tubing specs, contact CPC Inside Sales.



**Colder Products®**

call toll free 1-800-444-2474

or visit us at [www.colder.com](http://www.colder.com)

e-mail [info@colder.com](mailto:info@colder.com)



# HFC12 Series – NSF Listed

3/8" Nominal Flow, Polypropylene

Features	Benefits
High efficiency valve	More flow and less spillage in a compact size
Ergonomic design	Easy to grip, simple to operate
CPC compatible	Mates with HFC35 couplings
Compact, lightweight	Replaces bulky, heavy brass couplings

**Applications:** • Beverage dispensing • Syrup lines • Drain lines

U.S. Patent Nos. 5494074, 5316041, 357307, 384731

NOTE: These couplings conform to listing requirements of NSF standard C-2 for food equipment.



## HFC12 Series Specifications

**Pressure:** Vacuum to 60 psi, 4.2 bar  
**Temperature:** 32°F to 160°F, 0°C to 71°C  
**Materials:** Main components and valve: Polypropylene  
 Thumb latch: Polypropylene  
 Valve spring: 316 Stainless Steel  
 Panel mount gasket: Food Grade EPDM  
 External springs: 302 Stainless Steel  
 O-rings: Food Grade EPDM  
 Color: Light gray with charcoal gray latch  
**Tubing sizes:** 3/8" thru 3/4" ID, 9.5 mm thru 19 mm ID

## Coupling Bodies

### PIPE THREAD

THREAD SIZE	STRAIGHT THRU	SHUTOFF	LENGTH
3/8" NPT	63400	63300	2.69
1/2" NPT	61200	62800	2.88
3/4" NPT	63500	61800	3.07



## Coupling Inserts

*Straight thru dimension is listed first when two measurements are provided.*

### PIPE THREAD

THREAD SIZE	STRAIGHT THRU	SHUTOFF	LENGTH
3/8" NPT	62500	60500	1.77/1.88
1/2" NPT	64000	60400	1.95/2.06
3/4" NPT	64100	62100	2.14/2.26



## BULKHEAD PANEL MOUNT

### Hose Barb

TUBING SIZE	METRIC EQ.	STRAIGHT THRU	SHUTOFF	LENGTH
3/8" ID	9.5 mm ID	63800	62600	2.82
1/2" ID	12.7 mm ID	63900	60300	2.82
5/8" ID	15.9 mm ID	64600	64700	2.94
3/4" ID	19 mm ID	64300	62000	2.94



## IN-LINE

### Hose Barb

TUBING SIZE	METRIC EQ.	STRAIGHT THRU	SHUTOFF	LENGTH
3/8" ID	9.5 mm ID	65500	62700	1.97
1/2" ID	12.7 mm ID	61300	61400	1.97
5/8" ID	15.9 mm ID	65000	65100	2.01
3/4" ID	19 mm ID	64200	62200	2.14



## IN-LINE

### Hose Barb

TUBING SIZE	METRIC EQ.	STRAIGHT THRU	SHUTOFF	LENGTH
3/8" ID	9.5 mm ID	63600	60600	2.79
1/2" ID	12.7 mm ID	61500	60700	2.79
5/8" ID	15.9 mm ID	64800	64900	2.94
3/4" ID	19 mm ID	63700	61900	2.94



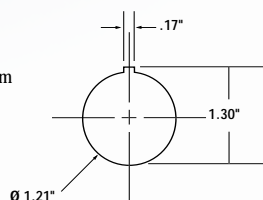
## ELBOW

### Hose Barb

TUBING SIZE	METRIC EQ.	STRAIGHT THRU	SHUTOFF	LENGTH
3/8" ID	9.5 mm ID	65200	61100	1.93/2.05
1/2" ID	12.7 mm ID	64400	61000	1.97/2.09
3/4" ID	19 mm ID	65400	65300	1.95



Gasket Thickness: .06"  
 Mounting Hole: 1.21" diameter  
 Coupling Spacing: 1.62" minimum  
 Panel Thickness: 1/4"



NOTE: Pressure, temperature, chemicals, and operating environment can affect the performance of these couplings. It is the customer's responsibility to test the suitability of these products in their own application conditions. For additional technical information please contact Colder Products at 1-800-444-2474.



# HFC35 Series – NSF Listed

3/8" Nominal Flow, Polysulfone



Features	Benefits
Polysulfone material	Physically strong and chemically-resistant
Bulkhead panel mount and garden hose thread options	More versatility in connections
CPC thumb latch	One hand connection and disconnection

## HFC35 Series Specifications

**Pressure:** Vacuum to 125 psi, 8.6 bar  
**Temperature:** -40°F to 280°F, -40°C to 138°C  
**Materials:** Main components and valve: Polysulfone  
 Thumb latch: Polysulfone  
 Valve spring: 316 Stainless Steel  
 Panel mount gasket: Food Grade EPDM  
 Female GHT gasket: Vinyl  
 External springs: 316 Stainless Steel  
 O-ring: Food Grade EPDM  
 Color: Natural white with charcoal gray latch

**Tubing sizes:** 3/8" thru 3/4" ID, 9.5 mm thru 19 mm ID

## Applications:

- Deionized water filtration
- Beverage dispensing
- Drain lines on food equipment

**STELLAR STEAMER**  
**HIGH PRODUCTION STEAM COOKING**  
 Quickly drain hose to bucket or floor drain. (Panel mount HFC shown on bottom left of machine.)

U.S. Patent Nos. 5494074, 5316041, 357307, 384731

NOTE: These couplings conform to listing requirements of NSF standard C-2 for food equipment.



## Coupling Bodies

### PIPE THREAD

#### Male Thread



THREAD SIZE	STRAIGHT THRU	SHUTOFF	LENGTH
3/8" NPT	86300	80100	2.73
3/8" BSPT	86700	86800	2.73
1/2" NPT	86400	80200	2.88
1/2" BSPT	83000	86900	2.88
3/4" NPT	87000	81900	3.12
3/4" BSPT	83300	87100	3.12
3/4" GHT	85900	86000	2.94

#### Female Thread



THREAD SIZE	STRAIGHT THRU	SHUTOFF	LENGTH
3/4" GHT	86100	86200	2.70
3/4" BSPP	87700	87800	2.70

### BULKHEAD PANEL MOUNT

#### Hose Barb



TUBING SIZE	METRIC EQ.	STRAIGHT THRU	SHUTOFF	LENGTH
3/8" ID	9.5 mm ID	86500	80300	2.82
1/2" ID	12.7 mm ID	86600	80400	2.82
5/8" ID	15.9 mm ID	87300	87400	2.94
3/4" ID	19 mm ID	87200	80500	2.94

### IN-LINE

#### Hose Barb



TUBING SIZE	METRIC EQ.	STRAIGHT THRU	SHUTOFF	LENGTH
3/8" ID	9.5 mm ID	83500	85600	2.82
1/2" ID	12.7 mm ID	83200	80700	2.82
5/8" ID	15.9 mm ID	87500	87600	2.94
3/4" ID	19 mm ID	82400	80800	2.94

## Coupling Inserts

*Straight thru dimension is listed first when two measurements are provided.*



### PIPE THREAD

#### Male Thread

THREAD SIZE	STRAIGHT THRU	SHUTOFF	LENGTH
3/8" NPT	83600	81400	1.82/1.94
3/8" BSPT	87900	88000	1.97/2.09
1/2" NPT	88100	81500	1.97/2.09
1/2" BSPT	82000	88300	1.17/2.09
3/4" NPT	82500	88200	2.22/2.34
3/4" BSPT	88400	88500	2.21/2.33
3/4" GHT	88600	88700	2.03/2.15

#### Female Thread



THREAD SIZE	STRAIGHT THRU	SHUTOFF	LENGTH
3/4" GHT	82600	89600	1.79/1.91
3/4" BSPP	88900	89000	1.79/1.91

### IN-LINE

#### Hose Barb



TUBING SIZE	METRIC EQ.	STRAIGHT THRU	SHUTOFF	LENGTH
3/8" ID	9.5 mm ID	89100	80900	1.91/2.03
1/2" ID	12.7 mm ID	83100	81000	1.91/2.03
5/8" ID	15.9 mm ID	89200	89300	2.03/2.15
3/4" ID	19 mm ID	89400	81100	2.03/2.15

### ELBOW

#### Hose Barb



TUBING SIZE	METRIC EQ.	STRAIGHT THRU	SHUTOFF	LENGTH
3/8" ID	9.5 mm ID	89500	81200	1.92/2.04
1/2" ID	12.7 mm ID	83400	81300	1.96/2.16



**Colder Products**

call toll free 1-800-444-2474

or visit us at [www.colder.com](http://www.colder.com)

e-mail [info@colder.com](mailto:info@colder.com)

# MC Series – NSF Listed

## 1/8" Nominal Flow, Chrome-Plated Brass

Features	Benefits
Brass material	Durable and able to withstand higher pressure and temperature
Chrome plating	Attractive appearance
CPC thumb latch	One hand connection and disconnection

### MC Series Specifications

**Pressure:** Vacuum to 250 psi, 17.3 bar  
**Temperature:** -40°F to 180°F continuous, -40°C to 82°C continuous  
**Materials:** Main components: Chrome-Plated Brass  
 Thumb latch: Stainless Steel  
 Valves: Acetal  
 Valve springs: 316 Stainless Steel  
 External springs and pin: Stainless Steel  
 O-ring: Food Grade Buna-N  
 Color: Chrome

**Tubing sizes:** 1/8" thru 1/4" ID, 3.2 mm thru 6.4 mm ID  
 5/32", 1/4" and 3/8" OD, 4 mm thru 9.5 mm OD

U.S. Patent No. 4703957

NOTE: These couplings conform to listing requirements of NSF standard C-2 for food equipment.



### Coupling Bodies

#### PIPE THREAD

THREAD SIZE	STRAIGHT THRU	SHUTOFF	LENGTH
1/8" NPT	15200	15500	1.00
1/8" BSPT	15600	15700	1.00
1/4" NPT	15800	15900	1.10
1/4" BSPT	16000	16100	1.00

#### PANEL MOUNT\*

##### Ferrules Polytube Fitting, PTF<sup>†</sup>

(Tubing must meet stated inside and outside diameters.)

TUBING SIZE	METRIC EQ.	STRAIGHT THRU	SHUTOFF	LENGTH
1/4" OD .170" ID	6 mm OD 4.3 mm ID	16200	16300	1.77

#### Hose Barb

TUBING SIZE	METRIC EQ.	STRAIGHT THRU	SHUTOFF	LENGTH
1/8" ID	3.2 mm ID	16400	16500	1.67
1/4" ID	6.4 mm ID	16600	16700	1.89

#### IN-LINE

##### Ferrules Polytube Fitting, PTF<sup>†</sup>

(Tubing must meet stated inside and outside diameters.)

TUBING SIZE	METRIC EQ.	STRAIGHT THRU	SHUTOFF	LENGTH
1/4" OD .170" ID	6 mm OD 4.3 mm ID	16800	16900	1.77

#### Hose Barb

TUBING SIZE	METRIC EQ.	STRAIGHT THRU	SHUTOFF	LENGTH
1/8" ID	3.2 mm ID	17000	17100	1.67
1/4" ID	6.4 mm ID	15400	17200	1.89

### Coupling Inserts

*Straight thru dimension is listed first when two measurements are provided.*

#### PIPE THREAD

THREAD SIZE	STRAIGHT THRU	SHUTOFF	LENGTH
1/8" NPT	17300	17400	1.03/1.43
1/8" NPT Female	17500	17600	.95/1.65
1/8" BSPT	17700	17800	1.03/1.43
1/4" NPT	17900	18000	1.08/1.43
1/4" NPT Female	18100	18200	1.15/1.82
1/4" BSPP Female	18300	18400	1.23/1.91

#### PANEL MOUNT\*

##### Ferrules Polytube Fitting, PTF<sup>†</sup>

(Tubing must meet stated inside and outside diameters.)

TUBING SIZE	METRIC EQ.	STRAIGHT THRU	SHUTOFF	LENGTH
1/4" OD .170" ID	6 mm OD 4.3 mm ID	18500	18600	1.75/1.85

#### Hose Barb

TUBING SIZE	METRIC EQ.	STRAIGHT THRU	SHUTOFF	LENGTH
1/8" ID	3.2 mm ID	18700	18800	1.65/1.75
1/4" ID	6.4 mm ID	18900	19000	1.87/1.97

#### IN-LINE

##### Ferrules Polytube Fitting, PTF<sup>†</sup>

(Tubing must meet stated inside and outside diameters.)

TUBING SIZE	METRIC EQ.	STRAIGHT THRU	SHUTOFF	LENGTH
1/4" OD .170" ID	6 mm OD 4.3 mm ID	19100	19200	1.15/1.55

#### Hose Barb

TUBING SIZE	METRIC EQ.	STRAIGHT THRU	SHUTOFF	LENGTH
1/8" ID	3.2 mm ID	19300	19400	1.05/1.65
1/4" ID	6.4 mm ID	19500	19600	1.25/1.67

#### ELBOW

##### Ferrules Polytube Fitting, PTF<sup>†</sup>

(Tubing must meet stated inside and outside diameters.)

TUBING SIZE	METRIC EQ.	STRAIGHT THRU	SHUTOFF	LENGTH
1/4" OD .170" ID	6 mm OD 4.3 mm ID	19700	19800	1.18/1.28

#### Hose Barb

TUBING SIZE	METRIC EQ.	STRAIGHT THRU	SHUTOFF	LENGTH
1/8" ID	3.2 mm ID	19900	20000	1.18/1.28
1/4" ID	6.4 mm ID	9480100	15100	1.18/1.28

\* Panel Opening = 1/2" Diameter  
 Panel Thread = 1/2-24 UNS  
 Maximum Panel Thickness = 1/2"  
 (except 1/8" pipe thread - .21")  
 Minimum Panel Thickness = .050"  
 Panel Nuts = 5/8"

<sup>†</sup>NOTE: CPC's Ferrules PTF (Polytube Fitting) terminations do not require ferrules to achieve a leak-free connection and are therefore easier to use and reuse. PTF fittings are designed for semi-rigid tubing, i.e. polyethylene, nylon, polyurethane, etc.

# LC Series – NSF Listed

## 1/4" Nominal Flow, Chrome-Plated Brass

### LC Series Specifications

- Pressure:** Vacuum to 250 psi, 17.3 bar  
**Temperature:** -40°F to 180°F continuous  
 -40°C to 82°C continuous  
**Materials:** Main components: Chrome-Plated Brass  
 Thumb latch: Stainless Steel  
 Valves: Acetal  
 Valve springs: 316 Stainless Steel  
 External springs and pin: Stainless Steel  
 O-ring: Food Grade Buna-N  
 Color: Chrome  
**Tubing sizes:** 1/4" thru 3/8" ID, 6.4 mm thru 9.5 mm ID  
 1/4" and 3/8" OD, 6 mm and 9.5 mm OD

NOTE: These couplings conform to listing requirements of NSF standard C-2 for food equipment.



**PORTION STEAMER**  
Quickly connects water line.

### Coupling Bodies



#### PIPE THREAD

THREAD SIZE	STRAIGHT THRU	SHUTOFF	LENGTH
1/4" NPT	71200	74600	1.15
1/4" BSPT	74700	74800	1.15
3/8" NPT	74900	75000	1.15
3/8" BSPT	75100	75200	1.15

#### PANEL MOUNT\*

##### Ferrules Polytube Fitting, PTF<sup>†</sup>

(Tubing must meet stated inside and outside diameters.)

TUBING SIZE	METRIC EQ.	STRAIGHT THRU	SHUTOFF	LENGTH
1/4" OD .170" ID	6 mm OD 4.3 mm ID	75300	75400	1.87
3/8" OD .250" ID	9.5 mm OD 6 mm ID	75500	75600	2.00

#### Hose Barb

TUBING SIZE	METRIC EQ.	STRAIGHT THRU	SHUTOFF	LENGTH
1/4" ID	6.4 mm ID	70200	70300	2.00
3/8" ID	9.5 mm ID	75700	75800	2.00

#### IN-LINE

##### Ferrules Polytube Fitting, PTF<sup>†</sup>

(Tubing must meet stated inside and outside diameters.)

TUBING SIZE	METRIC EQ.	STRAIGHT THRU	SHUTOFF	LENGTH
1/4" OD .170" ID	6 mm OD 4.3 mm ID	75900	76000	1.87
3/8" OD .250" ID	9.5 mm OD 6 mm OD	76100	76200	2.00

#### Hose Barb

TUBING SIZE	METRIC EQ.	STRAIGHT THRU	SHUTOFF	LENGTH
1/4" ID	6.4 mm ID	76300	70800	2.00
3/8" ID	9.5 mm ID	76400	76500	6.00

\* Panel Opening = 11/16" Diameter  
 Panel Thread = 11/16-24 UNEF  
 Maximum Panel Thickness = 1/2"  
 (except 1/4" pipe thread .35")  
 Minimum Panel Thickness = .050"  
 Panel Nuts = 13/16" Hex

<sup>†</sup>NOTE: CPC's Ferrules PTF (Polytube Fitting) terminations do not require ferrules to achieve a leak-free connection and are therefore easier to use and reuse. PTF fittings are designed for semi-rigid tubing, i.e. polyethylene, nylon, polyurethane, etc.

### Coupling Inserts

Straight thru dimension is listed first when two measurements are provided.



#### PIPE THREAD

THREAD SIZE	STRAIGHT THRU	SHUTOFF	LENGTH
1/4" NPT	71400	71500	1.25/1.68
1/4" NPT Female	71600	71700	1.25/1.90
1/4" BSPT	71800	71900	1.25/1.68
1/4" BSPP Female	72000	72100	1.25/1.75
3/8" NPT	72200	72300	1.25/1.55
3/8" BSPT	72400	72500	1.25/1.55

#### PANEL MOUNT\*

##### Ferrules Polytube Fitting, PTF<sup>†</sup>

(Tubing must meet stated inside and outside diameters.)

TUBING SIZE	METRIC EQ.	STRAIGHT THRU	SHUTOFF	LENGTH
1/4" OD .170" ID	6 mm OD 4.3 mm ID	72600	72700	1.83/1.98
3/8" OD .250" ID	9.5 mm OD 6 mm ID	72800	70700	1.96/2.11

#### Hose Barb

TUBING SIZE	METRIC EQ.	STRAIGHT THRU	SHUTOFF	LENGTH
1/4" ID	6.4 mm ID	72900	73000	1.96/2.11
3/8" ID	9.5 mm ID	73100	73200	1.96/2.11

#### IN-LINE

##### Ferrules Polytube Fitting, PTF<sup>†</sup>

(Tubing must meet stated inside and outside diameters.)

TUBING SIZE	METRIC EQ.	STRAIGHT THRU	SHUTOFF	LENGTH
1/4" OD .170" ID	6 mm OD 4.3 mm ID	73300	73400	1.25/1.87
3/8" OD .250" ID	9.5 mm OD 6 mm ID	73500	73600	1.38/1.83

#### Hose Barb

TUBING SIZE	METRIC EQ.	STRAIGHT THRU	SHUTOFF	LENGTH
1/4" ID	6.4 mm ID	70100	70500	1.35/2.00
5/16" ID	7.9 mm ID	73700	73800	1.35/1.85
3/8" ID	9.5 mm ID	73900	70900	1.35/1.83

#### ELBOW

##### Ferrules Polytube Fitting, PTF<sup>†</sup>

(Tubing must meet stated inside and outside diameters.)

TUBING SIZE	METRIC EQ.	STRAIGHT THRU	SHUTOFF	LENGTH
1/4" OD .170" ID	6 mm OD 4.3 mm ID	74000	74100	1.28/1.43
3/8" OD .250" ID	9.5 mm OD 6 mm ID	74200	74300	1.28/1.43

#### Hose Barb

TUBING SIZE	METRIC EQ.	STRAIGHT THRU	SHUTOFF	LENGTH
1/4" ID	6.4 mm ID	74400	70400	1.28/1.43
3/8" ID	9.5 mm ID	74500	71300	1.28/1.43







## CONDIMENT DISPENSER

Connect and disconnect volume packed bags without the unsanitary spillage/waste or clean-up costs. (Part numbers shown: 95800 and 95600)

U.S. Patent Nos. 5494074, 5316041, 357307, 384731

NOTE: These couplings conform to listing requirements of NSF standard C-2 for food equipment.



## Specifications

**Pressure:** 20" Hg Vacuum to 15 psi, 1 bar  
**Temperature:** 32°F to 160°F  
 0°C to 71°C  
**Materials:** Main components and valve: Polypropylene  
 Thumb latch: Polypropylene  
 Springs: 316 Stainless Steel  
 Cap: Acetal  
 Cap valve: Acetal  
 O-ring: FDA Silicone  
 CIP adapter: Acetal  
 Color: Light gray with charcoal gray latch  
**Closure Size:** SP-400 38mm  
**Tubing Size:** 3/8" thru 3/4" ID,  
 9.5mm thru 19mm ID

# Universal Dispensing Coupler

## 3/8" Nominal Flow, Polypropylene

The patented 3/8" flow Universal Dispensing Coupler (UDC) provides a universal connection to a 38 mm fitment neck. Make instant connections to most standard volume pack bags, so costly bag upchanges and ordering delays are a thing of the past. An ergonomic design and a large, shrouded thumb latch pad produce a coupling that is easy to grip and simple to operate.

Features	Benefits
Universal 38 mm cap	Fits most manufacturers fitment necks, which allows freedom to choose condiment supplier
Automatic shutoff when disengaged	Minimizes spillage
Integral terminations	Fewer leak points, shorter assemblies, faster installations
Shrouded thumb latch	Protects against accidental disconnects
Straight or elbow coupler	Adapts to your dispenser without rerouting supply lines

## Reduce labor and eliminate waste!

### Coupling Bodies

#### IN-LINE

##### Hose Barb

All measurements are in inches unless otherwise noted.

TUBING SIZE	O-RING FDA SILICONE	LENGTH
3/8" ID	99000	3.06
1/2" ID	95600	3.06
5/8" ID	99100	3.20
3/4" ID	99200	3.21

#### ELBOW

##### Hose Barb

TUBING SIZE	O-RING FDA SILICONE	LENGTH
3/8" ID	99300	3.25
1/2" ID	95400	3.25

### Cap

#### Valved 38 mm Cap

TUBING SIZE	O-RING FDA SILICONE	LENGTH
Without Thread Seal	95800	1.39
With Thread Seal	95801	1.39

### Clean-In-Place (CIP) Adapter

#### IN-LINE

##### Hose Barb

TUBING SIZE	PART NUMBER	LENGTH
1/2" ID (no O-ring)	96000	1.56



# Custom Design Couplings

CPC has designed thousands of solutions for unique coupling and fitting applications. Our Application staff is ready to work with your product designers to solve application problems beyond the scope of CPC's extensive standard product offerings.



## Consider Custom-Designed Couplings when:

- Quick disconnect couplings make your product more useful to your customer.
- You require a specific coupling configuration outside standard catalog offerings.
- Unique requirements combine to warrant your designers' collaboration with CPC's Design Team.



## The CPC Process

The CPC Process to developing special applications couplings incorporates eight steps to ensure you receive the optimum product for your specific needs.

- Review existing or previous connections.
- Discuss new connection objectives.
- Discuss preliminary design strategies.
- Analyze material, flow, mounting and shutoff options.
- Create engineered solutions with CAD and other design tools.
- Produce prototype when appropriate.
- Test prototypes.
- Manufacture products.

With solid modeling capabilities, prototyping equipment, test lab, and a multitude of proven solutions to take advantage of, we are ready to take on your most challenging connection application.



For over twenty years CPC has been creating custom designed, quick disconnect solutions that make our customer's products better and easier to use.



Engineering



Prototype



Final Product

# Technical Information

## Liquid Flow Rate Information for Couplings

The charts show the flow rate for CPC couplings. The tests were conducted with pipe thread bodies and hose barb inserts. Each coupling was tested in straight thru, single end shutoff and double end shutoff models with water at 70°F, 21°C. To determine flow rates for specific coupling configurations use the formula below.

### C<sub>v</sub> VALUES FOR APC COUPLINGS

#### Inserts

BODIES	40900	41000	44700
49200	0.96	1.08	0.94
40700	0.74	0.80	0.72
40800	0.98	1.28	0.96

### C<sub>v</sub> VALUES FOR 1/8" FLOW COUPLINGS (PMC & MC)

#### Inserts

BODIES	19100	19200	19300	19400	19500	19600	17300	17400	17900	18000	17500	9480100	19700	15100
15200	.40	.18	.25	.16	.50	.19	.50	.20	.51	.19	.50	.50	.38	.24
15500	.27	.18	.24	.16	.28	.20	.26	.20	.29	.18	.26	.26	.27	.24
15800	.40	.21	.26	.18	.50	.24	.50	.20	.51	.24	.50	.50	.38	.26
15900	.29	.19	.25	.17	.30	.23	.27	.21	.28	.23	.27	.28	.29	.24
16200	.40	.18	.25	.16	.40	.18	.40	.16	.36	.18	.40	.40	.38	.21
16300	.21	.17	.20	.16	.22	.17	.21	.17	.20	.17	.21	.22	.21	.18
16400	.23	.15	.19	.14	.27	.15	.27	.15	.28	.18	.27	.27	.23	.16
16500	.19	.15	.17	.14	.19	.15	.18	.15	.18	.15	.18	.19	.19	.15
16600	.33	.23	.24	.18	.44	.23	.44	.20	.38	.24	.38	.44	.33	.26
16700	.23	.17	.22	.16	.26	.21	.26	.19	.25	.21	.21	.26	.23	.24

### C<sub>v</sub> VALUES FOR 1/4" FLOW COUPLINGS (PLC & LC)

#### Inserts

BODIES	73300	73400	73500	73600	70100	70500	73900	70900	71400	71500	72200	72300	71600
71200	.40	.36	1.05	.58	.83	.56	1.40	.82	1.40	.75	1.40	.77	.83
74600	.36	.31	.73	.48	.66	.41	.82	.50	.80	.45	.77	.45	.81
74900	.40	.36	1.05	.60	.83	.56	1.40	.81	1.40	.76	1.40	.76	.83
75000	.37	.31	.81	.47	.70	.43	1.02	.51	.98	.46	.99	.48	.98
75500	.38	.36	.84	.63	.74	.56	1.14	.75	1.14	.70	1.14	.72	.74
75600	.38	.33	.78	.49	.68	.44	.84	.49	.81	.43	.82	.44	.81
70200	.38	.37	.87	.54	.95	.51	1.00	.70	.95	.64	1.00	.66	.95
70300	.37	.31	.61	.44	.57	.41	.78	.44	.78	.43	.75	.46	.78
75700	.38	.37	1.00	.57	.95	.53	1.40	.80	1.40	.71	1.40	.73	1.40
75800	.38	.32	.71	.49	.63	.42	.89	.51	.96	.45	.92	.49	.97

### C<sub>v</sub> VALUES FOR HIGH FLOW COUPLINGS (HFC)

#### Inserts

BODIES	65500	62700	61300	61400	65200	61100	64400	61000	62500	60500	64000	60400	64200	62200
63300	1.27	1.27	1.62	1.51	1.14	1.14	1.46	1.36	1.80	1.58	1.70	1.65	-	-
62800	1.28	1.34	1.62	1.51	1.15	1.24	1.46	1.36	1.81	1.54	1.72	1.56	-	-
62600	1.07	1.00	1.17	1.14	0.96	0.90	1.05	1.03	1.33	1.26	1.30	1.24	-	-
60300	1.25	1.23	1.61	1.52	1.13	1.11	1.45	1.37	1.79	1.60	1.68	1.56	-	-
60600	1.07	1.00	1.17	1.14	0.96	0.90	1.05	1.03	1.33	1.26	1.30	1.24	-	-
60700	1.25	1.23	1.61	1.52	1.13	1.11	1.45	1.37	1.79	1.60	1.68	1.56	-	-
63700	-	-	-	-	-	-	-	-	-	-	-	-	3.94	-
61900	-	-	-	-	-	-	-	-	-	-	-	-	-	2.04

$$Q = C_v \sqrt{\frac{\Delta P}{S}}$$

Q = Flow rate in gallons per minute.  
 C<sub>v</sub> = Average constant of various rates. See charts below.  
 ΔP = Pressure drop across coupling (psi).  
 S = Specific gravity of liquid.

#### Example:

Coupling Body = MC1004  
 Coupling Insert = MC2004  
 C<sub>v</sub> = .4 (see chart)  
 ΔP = 40 psi  
 S = 1 (water)

$$Q = C_v \sqrt{\frac{\Delta P}{S}} = .4 \sqrt{\frac{40}{1}} = 2.5 \text{ gallons per minute}$$

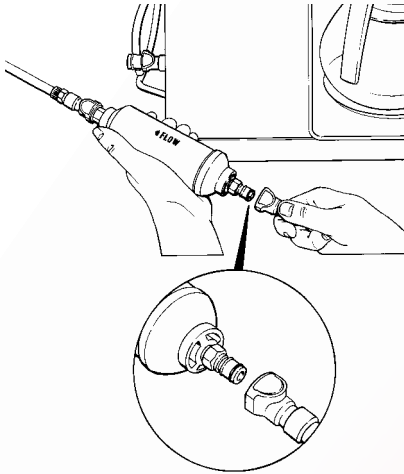
NOTE: For metric equivalents, consult CPC Customer Service.



# Application Examples

Colder Products couplings have solved fluid handling problems in a wide variety of applications within the food and beverage industries. Here are two examples.

## Coffee Brewer Connection and In-Line Water Filter Changeout



### STANDARD INDUSTRIAL CLASSIFICATION:

5963-07 - Coffee Break Service & Supply  
 5963-08 - Coffee Brewing Devices  
 5149-08 - Coffee Roasting  
 5149-39 - Food Service (Distributors)  
 5962-01 - Vending Machines

### APPLICATION:

- Water inlet lines on automatic coffee brewers, cappuccino, espresso and tea urns.
- In-line filter changeout

### MEDIA:

Water

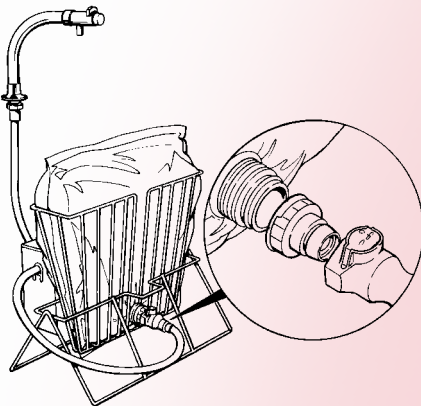
### CPC PART NUMBERS:

42000 Acetal Body Female Flare Thread without shutoff  
 43000 Acetal Insert PTF with shutoff  
 42800 Elbow Hose Barb Insert with shutoff  
 42300 Male Pipe Thread Body without shutoff

### FEATURES / BENEFITS:

- |   |  |  |
|---|--|--|
| <p><b>1) Automatic Shutoff Valve</b></p> <ul style="list-style-type: none"> <li>Eliminates messy spills.</li> <li>No more searching for the water source shutoff valve.</li> <li>Saves you time and money.</li> </ul> | <p><b>2) Push-button latch</b></p> <ul style="list-style-type: none"> <li>Easier to use than conventional fittings.</li> <li>Intuitive operation for all users.</li> <li>Easy to quickly connect and disconnect equipment.</li> <li>Makes servicing of equipment convenient</li> </ul> | <p><b>3) Audible Click</b></p> <ul style="list-style-type: none"> <li>Gives you confidence a secure connection is made.</li> </ul> <p><b>4) Elbow Configuration</b></p> <ul style="list-style-type: none"> <li>Prevents tubing kinks.</li> <li>Fits in tight spaces.</li> <li>You can plumb in many directions.</li> </ul> |
|---|--|--|

## Universal Dispensing Coupler



### STANDARD INDUSTRIAL CLASSIFICATION:

3565-02 - Packaging Machinery  
 5046-04 - Restaurant Equipment & Supplies  
 5812-08 - Fast Foods  
 5812-13 - Cafeterias  
 8221-01 - Universities

### APPLICATION:

Colder Products Company has developed a unique Universal Dispensing Coupler that works with powered condiment dispensing systems. The Universal Dispensing Coupler threads onto most standard volume pack bags (38mm Bag-In-Box) to connect the pump to the bag for dispensing condiments.

### MEDIA:

Ketchup, Mustard, Mayonnaise, Barbecue Sauce, Syrups, Coffee, Dairy, Butter, Detergents, Chemicals

### CPC PART NUMBERS:

00954-00 Polypropylene Elbow Body  
 00958-00 Acetal Universal Cap  
 00956-00 Polypropylene Straight Body  
 00960-00 Acetal CIP Adapter

### FEATURES / BENEFITS:

- |   |  |  |
|---|--|--|
| <p><b>1) Universal 38 mm Cap</b></p> <ul style="list-style-type: none"> <li>Freedom to choose condiment suppliers for savings.</li> <li>Wider product selection.</li> <li>Better product availability.</li> </ul> | <p><b>2) Clog free, high flow</b></p> <ul style="list-style-type: none"> <li>Exceeds dispenser manufacturer flow rates.</li> </ul> <p><b>3) Automatic Shutoff Valve</b></p> <ul style="list-style-type: none"> <li>Eliminates messy, expensive spills.</li> </ul> <p><b>4) Push-button latch</b></p> <ul style="list-style-type: none"> <li>Faster and cleaner box changeovers.</li> <li>Intuitive, easy to understand.</li> </ul> | <p><b>5) Audible Click</b></p> <ul style="list-style-type: none"> <li>Confidence of secure connection.</li> </ul> <p><b>6) Elbow or Straight Configuration</b></p> <ul style="list-style-type: none"> <li>Adapts to your dispenser without re-routing supply lines.</li> </ul> |
|---|--|--|

# Regulatory Approvals for CPC Products

## FDA and USDA

The U.S. Food and Drug Administration publishes, through the Code of Federal Regulations, standardized criteria which govern the acceptability of materials used in food contact. The U.S. Department of Agriculture publishes similar standards that mirror F.D.A. criteria. Neither agency approves or disapproves products for particular applications.

Most CPC products are made using resins that comply with applicable F.D.A. or U.S.D.A. standards. When necessary, the standard o-ring seals are replaced with specific recognized materials. Contact CPC Inside Sales for specific details regarding your application.

## NSF

NSF International, based in Ann Arbor, Michigan, develops and publishes consensual criteria that govern the acceptability of materials and equipment used in food and beverage processing. They also do testing to verify the performance of materials or devices to their published criteria.

CPC products found in the Food, Beverage & Water brochure are listed under the criteria of NSF Standard C-2, which governs components used in food and beverage contact applications. Contact CPC Inside Sales for specific details regarding your application.

## ISO 9001 Certification

ISO 9001 is a standard which assures consistency of a product ordered by customers. Organizations having ISO 9001 certification have demonstrated compliance to the ISO 9001 requirements by an independent registration authority.

Colder Products Company's Quality Management System has been approved and certified under the ISO 9001 standard. Contact CPC Quality Management for more information.



**Colder Products**

call toll free 1-800-444-2474

or visit us at [www.colder.com](http://www.colder.com)

e-mail [info@colder.com](mailto:info@colder.com)



**Colder Products Company**

1001 Westgate Drive  
St. Paul, Minnesota 55114  
U.S.A.

Phone: 651-645-0091  
Fax: 651-645-5404  
Toll Free: 1-800-444-2474  
info@colder.com  
[www.colder.com](http://www.colder.com)

**Colder Products Company GmbH**

Schmalweg 50  
D-55252 Mainz-Kastel  
Germany

Phone: +49-6134-2878-0  
Fax: +49-6134-287828  
Toll Free: 00800 600 50000  
cpcgmbh@colder.com  
[www.colder.com](http://www.colder.com)

**Colder Products Company Asia**

11A, Vista Court  
La Vista, Discovery Bay  
Hong Kong

Phone: 852-9436-5986  
Fax: 852-2987-2509  
asiapacific@colder.com  
[www.colder.com](http://www.colder.com)

ISO 9001  
CERTIFIED

Distributed By:

**CPC Warranty Statement:** Colder Products Company warrants its products against defects in workmanship and materials a period of 12 months from the date of sale by Colder Products Company to its initial customer (regardless of any subsequent sale of the products). This warranty is void if the product is misused, altered, tampered with or is installed or used in a manner that is inconsistent with Colder Product Company's written recommendations, specifications and/or instructions, or fails to perform due to normal wear and tear. Colder Products Company does not warrant the suitability of the product for any particular application. Determining product application suitability is solely the customer's responsibility. Colder Products Company is not liable for special, indirect, incidental, consequential or other damages including, but not limited to, loss, damage, personal injury, or any other expense directly or indirectly arising from the use of or inability to use its products either separately or in combination with other products. ALL OTHER WARRANTIES EXPRESS OR IMPLIED, WHETHER ORAL, WRITTEN OR IN ANY OTHER FORM, INCLUDING BUT NOT LIMITED TO WARRANTIES OF MERCHANTABILITY OR FITNESS FOR A PARTICULAR PURPOSE, ARE EXPRESSLY EXCLUDED.

The sole and exclusive remedy under this warranty is limited, at the option of Colder Products Company, to replacement of the defective product or an account credit in the amount of the original selling price. All allegedly defective Colder Products Company products must be returned prepaid transportation to Colder Products Company, together with information describing the product's application and performance, unless otherwise authorized in writing by Colder Products Company.

**CPC Patent Statement:** Colder Products Company takes pride in its innovative quick disconnect coupling solutions, many of which have been awarded United States and International patents. Colder Products Company has a strong tradition of leadership in the quick-disconnect market, and aggressively pursues and protects its proprietary information and intellectual property. In cases where it is practical and as a benefit to its customers, Colder Products Company has licensed its proprietary technology. Please contact Colder Products to discuss your unique needs.